

Table 5: Capacities

Size	ITK (Basic material)		ITK42 (Reinforced material)		d max <sup>(2)</sup> mm	d pilot ≈
	Torque M <sub>max</sub> <sup>(1)</sup> Nm	Radial Load S <sub>Tmax</sub> <sup>(1)</sup> N	Torque M <sub>max</sub> <sup>(1)</sup> Nm	Radial Load S <sub>Tmax</sub> <sup>(1)</sup> N		
2,5	4700	14500	6500	17650	66	20
5	6200	16500	8400	20000	77	20
7,5	7800	18500	10500	21500	88	20
10	10000	20000	16000	28000	98	20
13	16000	31000	21500	37000	112	47
16	20000	35000	27000	42500	126	47
20	24000	38500	31500	48000	140	47
30	28500	42000	39000	53000	155	47
40	39000	49000	53500	75000	183	47
50	64000	94000	91000	118000	210	77
60	78000	118000	127000	132000	220	77
100	127000	129000	180000	145000	250	102
150	180000	150000	241000	184000	295	102
210	275000	245000	360000	283000	305	102
260	328500	265000	425000	330000	315	102
340	400000	300000	529000	366000	335	178
420	500000	340000	660000	420000	380	208
620	685000	380000	815000	490000	425	238

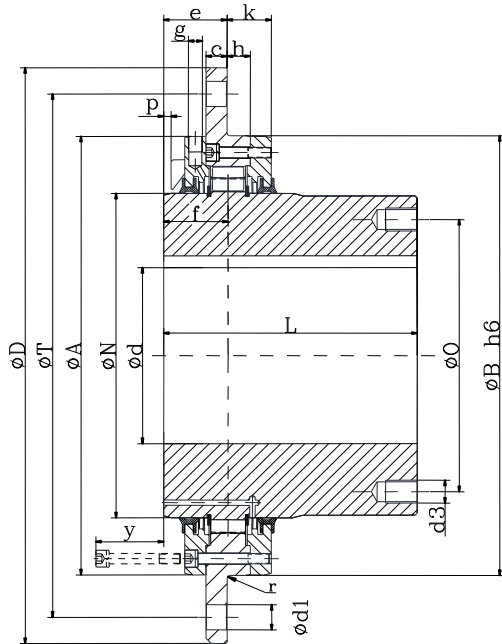
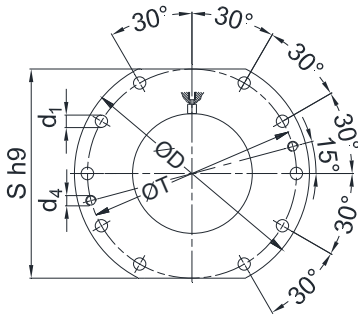


Table 5: Dimensions (mm)

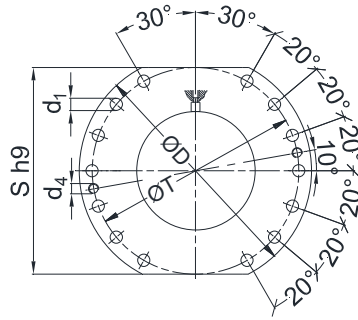
Size ITK ITK42	D	L	L min.	N	A	B h6	S h9 p.10	O	d3	p	e	f	c	h	k	r	y	g(3) G" gas	T	d1
2,5	250	95	85	95	159	160	220	-	-	5	42	44	12	16	31	2,5	50	1/8	220	15
5	280	100	85	110	179	180	250	-	-	5	42	44	12	16	31	2,5	50	1/8	250	15
7,5	320	110	95	125	199	200	280	-	-	5	45	46	15	17	32	2,5	60	1/8	280	19
10	340	125	95	140	219	220	300	-	-	5	45	46	15	17	32	2,5	60	1/8	300	19
13	360	130	95	160	239	240	320	-	-	5	45	47	15	19	34	2,5	60	1/8	320	19
16	380	145	95	180	259	260	340	-	-	5	45	47	15	19	34	2,5	60	1/8	240	19
20	400	170	95	200	279	280	360	165	M16	5	45	47	15	19	34	2,5	60	1/8	360	19
30	420	175	95	220	309	310	380	180	M16	5	45	47	15	19	34	2,5	60	1/8	380	19
40	450	185	120	260	339	340	400	215	M20	9	60	61	20	22	40	2,5	70	1/4	400	24
50	510	220	125	295	399	400	460	255	M20	7	60	61	20	22	42	2,5	70	1/4	460	24
60	550	240	125	310	419	420	500	260	M20	7	60	61	20	22	42	2,5	70	1/4	500	24
100	580	260	130	350	449	450	530	290	M24	7	60	61	20	22	42	2,5	70	1/4	530	24
150	650	315	140	415	529	530	580	350	M24	7	65	66	25	27	47	2,5	80	1/4	600	24
210	665	330	145	430	544	545	590	365	M30	7	65	69,5	25	34	54	4	90	1/4	615	24
260	680	350	145	445	559	560	600	375	M30	7	65	69,5	25	34	54	4	90	1/4	630	24
340	710	380	165	475	599	600	640	395	M30	13	81	85,5	35	34	59	4	90	1/4	660	28
420	780	410	165	535	669	670	700	445	M30	13	81	85,5	35	34	59	4	90	1/4	730	28
620	850	450	165	600	729	730	760	500	M30	13	81	85,5	35	34	59	4	90	1/4	800	28

- (1)- Reference maximum values according to size selection procedure
- (2)- Maximum values for keyways s/DIN 6885-1. For other methods, please ask.
- (3)- Radial grease input hole for sizes up to 260. Front grease input hole for sizes ≥340

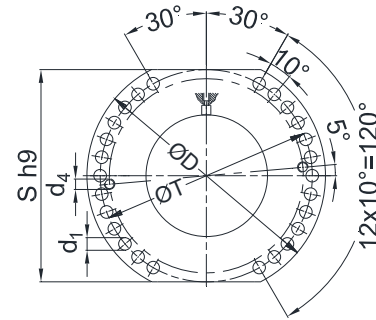
# Barrel Coupling ITK / ITK42



ITK 2,5 – ITK 60



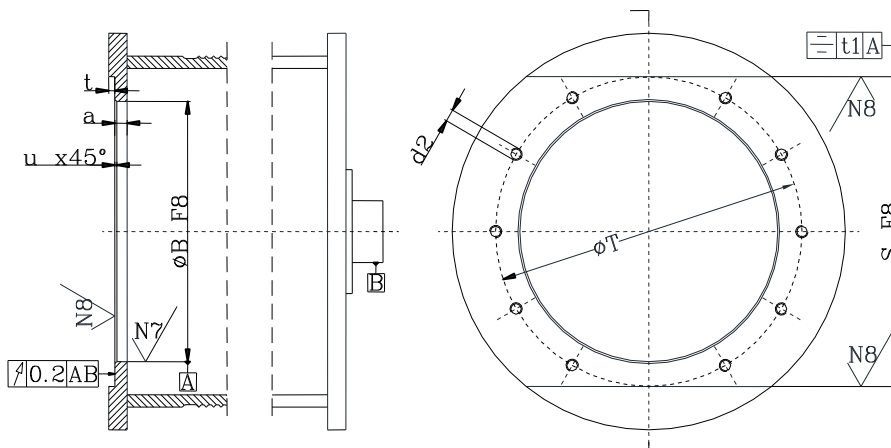
ITK 100 – ITK 150



ITK 260 – ITK 620

Size ITK/ ITK42	T	S F8/h9	B F8/h6	a min	t min	u	d1	n°	d2	d4 2x	Axial gap max <sup>(4)</sup>	Weight kg <sup>(5)</sup>	J kgm2 <sup>(5)</sup>
2,5	220	220	160	18	12	3	15	10	M12	M12	±3	12	0,06
5	250	250	180	18	12	3	15	10	M12	M12	±3	16	0,09
7,5	280	280	200	25	15	3	19	10	M16	M16	±4	23	0,17
10	300	300	220	25	15	3	19	10	M16	M16	±4	29	0,23
13	320	320	240	25	15	3	19	10	M16	M16	±4	35	0,32
16	340	340	260	25	15	3	19	10	M16	M16	±4	45	0,44
20	360	360	280	25	15	3	19	10	M16	M16	±4	59	0,61
30	380	380	310	25	15	3	19	10	M16	M16	±4	73	0,85
40	400	400	340	30	20	3	24	10	M20	M20	±4	101	1,45
50	460	460	400	30	20	3	24	10	M20	M20	±6	152	2,86
60	500	500	420	30	20	3	24	10	M20	M20	±6	180	3,73
100	530	530	450	30	20	3	24	14	M20	M20	±6	228	5,35
150	600	580	530	30	25	3	24	14	M20	M20	±6	379	11,64
210	615	590	545	30	25	5	24	26	M20	M20	±6	426	13,79
260	630	600	560	30	25	5	24	26	M20	M20	±6	477	16,07
340	660	640	600	36	35	5	28	26	M24	M20	±8	545	22,73
420	730	700	670	36	35	5	28	26	M24	M20	±8	725	35,26
620	800	760	730	36	35	5	28	26	M24	M20	±8	961	59,65

(4)- Values for angularly aligned coupling.  
(5)- Values for d pilot.



t1=	0,10mm ITK-2.5 ÷ ITK-50
	0,20mm ITK-60 ÷ ITK-1020

- The flange material must be S355JR EN-10025-2 or higher
- The drum and flange fixing screws must be in quality 8.8 or higher for ITK models and quality **10.9 or higher for ITK42 models**